

Explorer SE

Field Guide

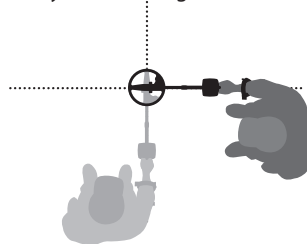


MINELAB

The exact location of a target can be located by using **PINPOINT**.

- 1 Once the approximate target location is known, move the coil away from that area and press **PINPOINT**.
- 2 Sweep the coil slowly over the target location.
- 3 Taking note of the response, reduce the span of each successive pass of the coil until you are confident of the location of the target. Make a mental note of the position or, mark a line on the soil with your shoe or a digging tool.
- 4 Move to one side so that you can pass the coil over the target at right angles to your initial direction. When the detector sounds you should know exactly where to dig.

PINPOINT



Increases **Sensitivity**

Switches between **Semi-Automatic** and **Manual Sensitivity**

Decreases **Sensitivity**

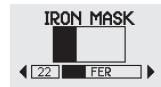
Turns the detector **On/Off**

Reduces electrical interference or **Noise**

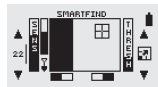
Accesses the **Menu** to change other functions

Turns **Iron Mask** On / Off, switching between three screens:

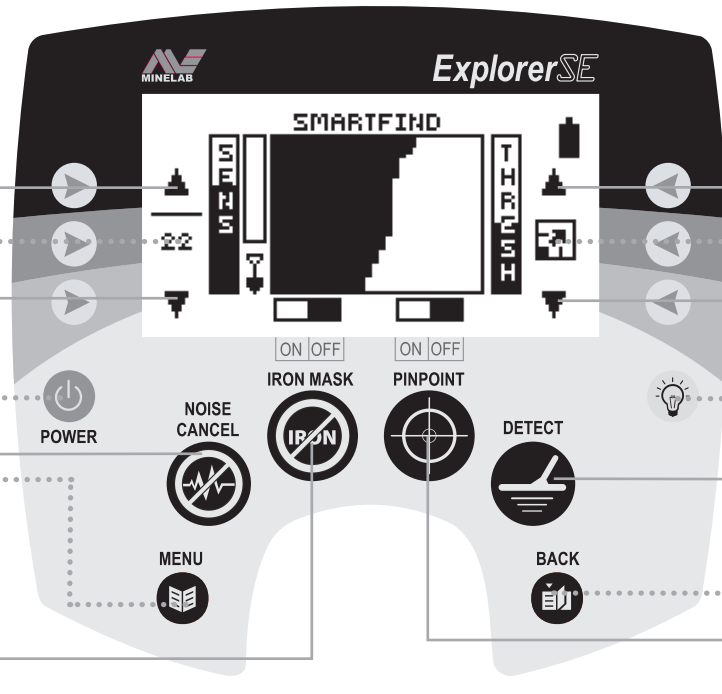
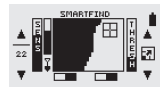
Iron Mask ON - adjustment screen



Iron Mask ON - Smartfind or Digital



Smartfind or Digital (Iron Mask OFF)



Increases **Threshold** Volume

Switches between Normal and **Full Screen Display**

Decreases **Threshold** Volume

Turns on the Backlight

Switches between Smartfind and Digital **Detect** Displays



Retraces your steps **back** through the displays

Pinpoints the exact location of a target